

VersaCAMM

Roland DG Corporation

SP-540V & SP-300V

Inkjet Printer/Digital Die-Cutters

Specifications

Model		SP-540V	SP-300V
Printing / Cutting method			
		Piezo ink-jet method / media-moving method	
Acceptable media widths			
		210 to 1371 mm (8-5/16 to 54 in.)	182 to 762 mm (7-3/16 to 30 in.)
Printing / Cutting width *1			
		Maximum 1346 mm (53 in.)	Maximum 736 mm (29 in.)
Ink cartridges			
Capacity		220 cc ±5 cc	
Color		Four colors (cyan, magenta, yellow, and black)	
Printing resolution (Printing dot resolution)			
		Maximum 1,440 dpi	
Acceptable tool			
		Special blade for CAMM-1 series	
Cutting speed			
		10 to 300 mm/s	
Blade force			
		30 to 300 gf	
Blade offset compensation			
		0.000 to 1,500 mm (0 to 0.0591 in.)	
Software resolution (When cutting)			
		0.025 mm/step (0.000984 in./step)	
Distance accuracy (When printing) *2*3			
		Error of less than ±0.3 % of distance traveled, or ±0.3 mm, whichever is greater	
Distance accuracy (When cutting) *3			
		Error of less than ±0.4 % of distance traveled, or ±0.3 mm, whichever is greater When distance correction has been performed (when the setting for [CALIBRATION] - [CUTTING ADJ.] has been made): Error of less than ±0.2 % of distance traveled, or ±0.1 mm, whichever is greater	
Repetition accuracy (When cutting) *3*4			
		±0.1 mm or less	
Repetition between printing and cutting *3*5			
		±0.5 mm or less	
Alignment accuracy for printing and cutting when reloading media *3*6			
		Error of less than ±0.5 % of distance traveled, or ±3 mm, whichever is greater	
Media dryer			
		Heating method, Setting range for the preset temperature: 35 to 50 °C (95 to 122 °F)	
Ink-fixing device			
		Print heater, Setting range for the preset temperature: 35 to 50 °C (95 to 122 °F)	
Interface			
		Ethernet (10BASE-T/100BASE-TX, automatic switching)	USB interface (compliant with Universal Serial Bus Specification Revision 1.1)
Power-saving function			
		Automatic sleep feature (compliant with the International ENERGY STAR® Office Equipment Program)	
Power supply			
Voltage and frequency		AC 100 to 120 V ±10 %, 50 / 60 Hz or AC 220 to 240 V ±10 %, 50 / 60 Hz	
Required power capacity		8.8 A (100 to 120 V) or 4.7 A (220 to 240 V)	6 A (100 to 120 V) or 3 A (220 to 240 V)
Power consumption			
During operation		Approx. 1080 W (100 to 120 V) or 1230 W (220 to 240 V)	Approx. 470 W (100 to 120 V) or 650 W (220 to 240 V)
Sleep mode		Approx. 30 W	
Acoustic noise level			
During operation		64 dB (A) or less (according to ISO 7779)	
During standby		40 dB (A) or less (according to ISO 7779)	
Dimensions (With stand)			
		2390 (W) x 800 (D) x 1291 (H) mm (94-1/8 (W) x 31-1/2 (D) x 50-7/8 (H) in.)	1720 (W) x 770 (D) x 1275 (H) mm (67-3/4 (W) x 30-3/8 (D) x 50-1/4 (H) in.)
Weight (With stand)			
		149 kg (329 lb.)	124 kg (273 lb.)
Packed dimensions			
		2560 (W) x 830 (D) x 1035 (H) mm (101 (W) x 32-3/4 (D) x 40-3/4 (H) in.)	1890 (W) x 830 (D) x 900 (H) mm (74-1/2 (W) x 32-3/4 (D) x 35-1/2 (H) in.)
Packed weight			
		200 kg (441 lb.)	161 kg (355 lb.)
Environment			
Power on		Temperature: 15 to 32 °C (59 to 90 °F) (20 °C [68 °F] or more recommended), humidity: 35 to 80 % (no condensation)	
Power off		Temperature: 5 to 40 °C (41 to 104 °F), humidity: 20 to 80 % (no condensation)	
Included items			
		Stand, power cord, blade, blade holder, replacement blade for separating knife, cleaning kit, software RIP, manuals, etc.	

*1 The length of printing or cutting is subject to the limitations of the program or driver.
 *2 Using Roland specified media, print travel of 1m, preset temperature of 25 °C (77 °F), humidity of 50 %
 *3 Not assured when the print heater or dryer is used.
 *4 Provided that media length is under 3000 mm, Temperature: 25 °C (77 °F)
 Excluding possible shift caused by expansion / contraction of the media and / or by reloading the media
 *5 Provided that media length is under 3000mm, Temperature: 25 °C (77 °F).
 Excluding possible shift caused by expansion / contraction of the media and / or by reloading the media

*6 Media type: Roland specified media, data size: 1000 mm in the media-feed direction, 1346 mm in the carriage-movement direction.
 No lamination, Automatic detection of crop marks at 4 points when media is reloaded.
 During cutting, [PREFEED] menu item must be set to [ENABLE], Temperature: 25 °C (77 °F).
 Excludes the effects of slanted movement and of expansion and contraction of the media.

Roland VersaWorks System Requirements

Operating system	Windows® XP Professional Service Pack 1 or later or Windows® 2000 Service Pack 4 or later	RAM	1 GB or more recommended
CPU	Pentium 4 2.0 GHz or faster recommended	Free hard-disk space	40 GB or more recommended

Options

ECO-SOL MAX MEDIA (for Signage)	ECO-SOL MAX MEDIA (for Decals)	ECO-SOL MAX MEDIA (for Garment Heat Transfer)	ECO-SOL MAX INK	Blades	Blade Holders	Take-up Rollers
SPVCB-1270	PVC banner, 1270 mm x 20 m (50" x 65')	ECO-SOL MAX MEDIA (for Decals)	SP-SG-610G	Gray adhesive, 610 mm (24.01") x 30 m (98.42 ft)	XD-CH3	TU-550
SP-SG-1270G	PET semi gloss, gray adhesive, 1270 mm x 30 m (50" x 98')	ECO-SOL MAX MEDIA (for Garment Heat Transfer)	SP-SG-610TR	Removable adhesive, 610 mm (24.01") x 30 m (98.42 ft)	TU-550	TU-300
SP-SG-1270TR	PET semi gloss, removable adhesive, 1270 mm x 30 m (50" x 98')	ECO-SOL MAX MEDIA (for Garment Heat Transfer)	SCM-TRH-25-750	Garment heat transfer material, 750 mm x 25 m (29.52") x (82 ft)	TU-300	
SP-M-1270	Matte PET film, 1270 mm x 30 m (50" x 98')	ECO-SOL MAX MEDIA (for Garment Heat Transfer)	HTSP-10-500	Special silicon paper for matte finish, 500 mm x 10 m (19.68") x (32.8 ft)		
SPPLF-1300	Backlit film, 1300 mm x 30 m (51-1/8" x 98')	ECO-SOL MAX MEDIA (for Garment Heat Transfer)	HTTA-10-500	Application film, 500 mm x 10 m (19.68") x (32.8 ft)		
SCM-GBMW-50-1180	Polyethylene banner, 1180 mm x 50 m (46-7/16" x 164')	ECO-SOL MAX MEDIA (for Garment Heat Transfer)	ESL3-MG	Magenta, 220 cc		
SCM-GPPG-50-914	White glossy photo paper, 914 mm x 50 m (36" x 164')	ECO-SOL MAX MEDIA (for Garment Heat Transfer)	ESL3-YE	Yellow, 220 cc		
SCM-GPPG-50-1270	White glossy photo paper, 1270 mm x 50 m (50" x 164')	ECO-SOL MAX MEDIA (for Garment Heat Transfer)	ESL3-CY	Cyan, 220 cc		
SCM-GPET40-500	Polyester gold gloss film, adhesive, 500 mm (19.68") x 40 m (131.23 ft)	ECO-SOL MAX MEDIA (for Garment Heat Transfer)	ESL3-BK	Black, 220 cc		
SCM-GSPET40-500	Polyester silver gloss film, adhesive, 500 mm (19.68") x 40 m (131.23 ft)	ECO-SOL MAX MEDIA (for Garment Heat Transfer)	ZEC-U5022	For thick, reflective and fluorescent vinyl, 2 pcs.		
SCM-GGPVC-40-610	PVC monomeric gold film, adhesive, 610 mm (24.01") x 40 m (131.23 ft)	ECO-SOL MAX MEDIA (for Garment Heat Transfer)	ZEC-U5025	For thick, reflective and fluorescent vinyl, 5 pcs.		
SCM-GSPVC-40-610	PVC monomeric silver film, adhesive, 610 mm (24.01") x 40 m (131.23 ft)	ECO-SOL MAX MEDIA (for Garment Heat Transfer)				
SP-M-610	Matte PET film, 610 mm (24.01") x 30 m (98.42 ft)	ECO-SOL MAX MEDIA (for Garment Heat Transfer)				

An ENERGY STAR® Partner, Roland DG Corporation has determined that this product meets the ENERGY STAR guidelines for energy efficiency.
 ENERGY STAR is a U.S. registered mark.

ISO 14001 and ISO 9001:2000 Certified
 Roland pursues both environmental protection and continuous quality improvement. Under the philosophy of preserving the environment and human health, Roland DG is actively working to abolish organic solvents in production, to reduce and recycle waste, to reduce power use, and to purchase recycled products. Roland DG constantly strives to provide the most highly reliable products available.

Roland reserves the right to make changes in specifications, materials or accessories without notice. Your actual output may vary. For optimum output quality, periodic maintenance to critical components may be required. Please contact your Roland dealer for details. No guarantee or warranty is implied other than expressly stated. Roland shall not be liable for any incidental or consequential damages, whether foreseeable or not, caused by defects in such products. PostScript is a trademark of Adobe Systems Incorporated. All other trademarks are the property of their respective owners.

VersaCAMM. The Perfect Fit

VersaCAMM is Roland's best-selling integrated print/cut solution and everything you could ask for in a low-cost digital printer. Available in both 30-inch-wide and 54-inch-wide models, VersaCAMM delivers 4-color inkjet printing and precision digital die-cutting in one device. Now you can print and cut a wide variety of applications that last up to three years outdoors without lamination.*

*Three years outdoor durability is based on accelerated weather tests conducted by Roland DG. Results may vary depending upon location and application. Severe applications, such as floor and vehicle graphics, require lamination.



VersaCAMM
Roland DG Corporation

54" ECO-SOL MAX Printer/Cutter



SP-540V

30" ECO-SOL MAX Printer/Cutter



SP-300V

ECO-SOL MAX INK — Durable and Safe to Use

ECO-SOL MAX features significant new enhancements including faster drying time, improved scratch resistance, higher density, and wider color gamut with both coated and uncoated substrates. Virtually odorless, ECO-SOL MAX does not require any special ventilation or environmental equipment.



Keeping Costs Low

The combination of an integrated heating system and ECO-SOL MAX allows the VersaCAMM to print on a wide variety of commercially available media. Choose from uncoated vinyl and banner materials for lower production costs, or Roland's premium SOL MEDIA, including backlit and glossy paper, for

dependable indoor and outdoor use. As always, Roland provides unparalleled support, including printing profiles for the most popular media.

One Complete Solution for Printing & Digital Die-Cutting

Whether you use it as a printer, printer/cutter or stand-alone vinyl cutter, VersaCAMM will provide dependable performance. This three-in-one versatility allows you to handle a wide variety of jobs including even the most complex applications. As a cutter, VersaCAMM digitally die-cuts decals, signs, labels, etc., quickly and precisely. Once an image has been printed, it can be automatically die-cut without having to reload or reposition the



media. If lamination is needed, Roland's unique Quadralign® optical registration system automatically generates crop marks at all four corners, allowing you to remove a print, laminate and then reload it for letter perfect die-cutting.

A Host of Advanced Features

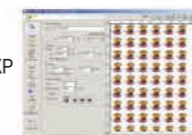
- An automatic sheet cutter for separating output after it has been printed.
- A sensor that produces an audible warning when ink is running low.
- A media tracking system allows you to record media changes and measure the media you have remaining.
- An adjustable print head height for the SP-540V.
- The SP-540V includes five detachable middle pinch rollers, ensuring precision media feeding for quality printing even on heavyweight banner stock.

Roland VersaWorks® — Advanced RIP Software For Your VersaCAMM



Roland's most advanced RIP, VersaWorks, is both incredibly powerful and amazingly easy to use. VersaWorks features an efficient

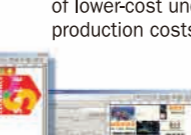
graphical user interface (GUI) that allows users to easily import files from their favorite programs and to maximize their Roland inkjets without a lengthy learning curve. Simply click on buttons to open menus. Drag and drop files to the printer queue. An automatic update feature ensures that you are always working with the latest VersaWorks version and profiles. VersaWorks is compatible with Windows® 2000/XP Professional and Windows Vista™.



• Multiple copies of single image



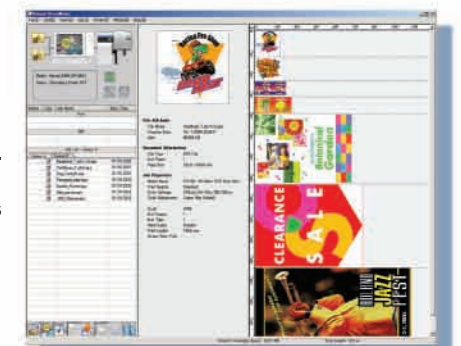
• Auto Layout



• Tiling

More VersaWorks Features:

- Wide variety of convenient layout functions includes scaling, cropping, rotating, auto layout, tiling and more.
- Built upon the latest Adobe® PostScript® 3™ RIP engine which supports popular software and common file formats such as TIFF, JPEG, EPS, PostScript and PDF 1.5.
- Includes advanced color management features developed exclusively for Roland inkjet printers such as calibration, linearization, software proofing and an ICC Profile Creating Wizard.
- Roland@NET provides automatic updating of software and media profiles, including support for a wide variety of lower-cost uncoated media, resulting in lower overall production costs.



• VersaWorks® main menu



• Buttons on main menu open most functions.

