



RS  
VersaArt  
RS-640/RS-540 64" and 54" Inkjet Printer

Specifications

	RS-640	RS-540
<b>Printing technology</b>	Piezoelectric inkjet	
<b>Media</b>	Width	259 to 1,625 mm (10.2 to 64 in.)
	Thickness	Maximum 1.0 mm (39 mil) with liner
	Roll outer diameter	Maximum 210 mm (8.3 in.)
	Roll weight	Maximum 40 kg (88 lb.) [30kg (66 lb.) when take-up system used.]
<b>Core diameter</b>	50.8 mm (2 in.) or 76.2 mm (3 in.)	
	Core diameter	Maximum 30 kg (66 lb.)
<b>Printing width</b> *1	Maximum 1,615 mm (63.6 in.)	Maximum 1,361 mm (53.6 in.)
<b>Ink cartridges</b>	Types	Roland ECO-SOL MAX Ink
	Capacity	220 cc or 440 cc
	Color	Four colors (cyan, magenta, yellow, and black)
<b>Printing resolution (dots per inch)</b>	Maximum 1,440 dpi	
<b>Distance accuracy</b> *2 *3	Error of less than ±0.3% of distance traveled, or ±0.3 mm, whichever is greater	
<b>Media heating system</b> *4	Print heater, setting range for the preset temperature: 30 to 45°C (86 to 112°F)	
	Dryer, setting range for the preset temperature: 30 to 50°C (86 to 122°F)	
<b>Connectivity</b>	Ethernet (10BASE-T/100BASE-TX, automatic switching)	
<b>Power-saving function</b>	Automatic sleep feature	
<b>Power requirements</b>	AC 100 to 120 V ±10%, 7.8 A, 50/60 Hz or	AC 100 to 120 V ±10%, 7.6 A, 50/60 Hz or
	AC 220 to 240 V ±10%, 4.0 A, 50/60 Hz	AC 220 to 240 V ±10%, 3.9 A, 50/60 Hz
<b>Power consumption</b>	During operation	Approx. 1,030 W
	Sleep mode	Approx. 14 W
<b>Acoustic noise level</b>	During operation	63 dB or less
	During standby	44 dB or less
<b>Dimensions</b>	With stand	2,570 (W) x 740 (D) x 1,103 (H) mm (101.2 (W) x 29.1 (D) x 43.4 (H) in.)
	With ink-cartridge tray and stand	2,570 (W) x 1,000 (D) x 1,103 (H) mm (101.2 (W) x 39.4 (D) x 43.4 (H) in.)
<b>Weight (with stand)</b>	133 kg (293 lb.)	122 kg (269 lb.)
<b>Environmental</b>	Power on	Temperature: 15 to 32°C (59 to 90°F) (20°C [68°F] or more recommended), humidity: 35 to 80%RH (non-condensing)
	Power off	Temperature: 5 to 40°C (41 to 104°F), humidity: 20 to 80%RH (non-condensing)
<b>Accessories</b>	Stand, power cord, media clamps, media flanges, replacement blade for separating knife, cleaning kit, software RIP, User's Manual, etc.	

\*1 The length of printing is subject to the limitations of the program.

\*2 Using Roland specified media, print travel of 1m, temperature: 25°C (77°F), humidity: 50%RH

\*3 Not assured when the print heater or dryer is used.

\*4 Warm-up is required after powerup. This may require 5 to 20 minutes, depending on the operating environment. The preset temperature may fail to be reached depending on the ambient temperature and media width.

Roland VersaWorks System Requirements

<b>Operating system</b>	Windows® 7 Professional/Ultimate (32/64-bit); Windows Vista® Business/Ultimate (32/64-bit edition), or Windows XP Professional Service Pack 2 or later (32/64-bit)
<b>CPU</b>	Core™ 2 Duo, 2.0 GHz or faster recommended
<b>RAM</b>	2 GB or more recommended
<b>Video card and monitor</b>	A resolution of 1,280 x 1,024 or more recommended
<b>Free hard-disk space</b>	40 GB or more recommended
<b>Hard-disk file system</b>	NTFS format
<b>Optical drive</b>	DVD-ROM drive

\*Roland VersaWorks® is a 32-bit application, which runs on 64-bit Windows® with WoW64 (Windows 32-bit on Windows 64-bit).

Options

	Model	Description
<b>ECO-SOL MAX Media</b>	ESP-CL-1300	Clear PET film, 1,300 mm x 30 m (51" x 98')
	SP-CL-1000T	Clear PET film, adhesive, 1,000 mm x 20 m (39.37' x 65.61')
	SP-SG-1270G	PET semi gloss, gray adhesive, 1,270 mm x 30 m (50' x 98')
	SP-SG-1270TR	PET semi gloss, removable adhesive, 1,270 mm x 30 m (50' x 98')
	SPVCB-1270	PVC banner, 1,270 mm x 20 m (50' x 65')
	SP-M-1270	Matte PET film, 1,270 mm x 30 m (50' x 98')
	SFPLF-1300	Backlit film, 1,300 mm x 30 m (51.18" x 98')
	SCM-GBMW-50-1180	Polyethylene banner, 1,180 mm x 50 m (46.45' x 164')
	SCM-GPPG-50-914	White glossy photo paper, 914 mm x 50 m (36' x 164')
	SCM-GPPG-50-1270	White glossy photo paper, 1,270 mm x 50 m (50' x 164')
	SCM-GVWG-40-1370	Monomeric calendered self adhesive vinyl white glossy-permanent adhesive, 1,370 mm x 40 m (53.93" x 131')
	SCM-GVWG-40-1525	Monomeric calendered self adhesive vinyl white glossy-permanent adhesive, 1,525 mm x 40 m (60" x 131')
	<b>ECO-SOL MAX Ink</b>	ESL3-4MG
ESL3-4YE		Yellow, 440 cc
ESL3-4CY		Cyan, 440 cc
ESL3-4BK		Black, 440 cc
ESL3-MG		Magenta, 220 cc
ESL3-YE		Yellow, 220 cc
ESL3-CY		Cyan, 220 cc
ESL3-BK		Black, 220 cc
<b>Take-up System</b>	SL-CL	Cleaning liquid, 1 pc.
	TU2-64	For RS-640, rolls up to 30kg (66lbs.)
	TU2-54	For RS-540 rolls up to 30kg (66lbs.)
	TUC-2	Controller for TU2-64 and TU2-54 take-up systems

Roland DG products that feature this environmental label meet the company's criteria for environmental consciousness, a set of standards based on ISO 14021 self-declaration type II. For more information, please visit [www.rolanddg.com](http://www.rolanddg.com).



As an ENERGY STAR® partner, Roland DG Corporation has determined that this product meets the ENERGY STAR guidelines for energy efficiency. ENERGY STAR is a U.S. registered mark.



ISO 14001:2004 and ISO 9001:2008 Certified

Roland pursues both environmental protection and continuous quality improvement. Under the philosophy of preserving the environment and human health, Roland is actively working to abolish organic solvents in production, to reduce and recycle waste, to reduce power use, and to purchase recycled products. Roland constantly strives to provide the most highly reliable products available.



Roland reserves the right to make changes in specifications, materials or accessories without notice. Your actual output may vary. For optimum output quality, periodic maintenance to critical components may be required. Please contact your Roland dealer for details. No guarantee or warranty is implied other than expressly stated. Roland shall not be liable for any incidental or consequential damages, whether foreseeable or not, caused by defects in such products. Adobe, PostScript, PostScript 3 and the PostScript logo are trademarks of Adobe Systems Incorporated. All other trademarks are the property of their respective owners. Roland DG Corp. has licensed the MMP technology from the TPL Group.



# VersaArt — Setting A New Standard for Visual Communication

Get photorealistic image quality for stunning indoor prints



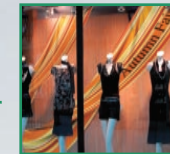
Achieve flawless print quality on interior backlights



Make a statement with colorful, durable outdoor banners



Print stand-out event graphics on fabric banner media



Command attention with brilliant bus shelters, transit ads and outdoor posters



Wrap vehicles and accessories for high-impact results



Photo: RS-640 with optional take-up system, TU2-64 and TUC-2



## VersaArt

RS-640 64" RS-540 54"

4-color CMYK wide-format inkjet printer

### Packed With Our Most Advanced Features

The VersaArt RS-640 and RS-540 ECO-SOL MAX® ink were engineered to give your business a competitive edge, taking full advantage of Roland's leadership technology in wide-format inkjet printing. Explore profitable new applications ranging from high quality indoor design proofs, photographic reproductions and posters to stunning outdoor banners, signs and vehicle graphics—all produced on a single device. VersaArt prints reflect the highest image quality thanks to Roland Intelligent Pass Control® technology, a unique three-dimensional ink firing system that precisely controls droplet size and placement for exceptionally smooth results every time. Choose from a wide variety of media including popular new low-cost fabrics for soft signage and textiles.



■ RS-640 Throughput	m <sup>2</sup> /hr (sqft/hr)
<b>Banner</b>	
Billboard	21.4 (230.3)
High Speed	16 (172.2)
Standard	12.7 (136.7)
High Quality	4.9 (52.7)
<b>Vinyl</b>	
High Speed	13 (139.9)
Standard	10.4 (111.9)
High Quality	4.9 (52.7)

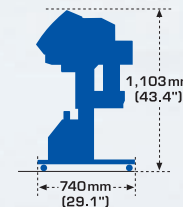
### Powerful Productivity Tools

Built on the latest Adobe PostScript Engine, Roland VersaWorks® professional RIP software supports Roland Intelligent Pass Control® technology for flawless image quality at the highest print speeds. In addition to advanced cropping, tiling and nesting options, VersaWorks includes the Roland Color System for precision spot color matching and an estimation function that records the ink usage and print time for each graphic. VersaWorks also includes Variable Data Printing, the Max Impact™ Preset for richer color contrast, embedded ICC profile support, ink level adjustment tools and software proofing capabilities. VersaWorks seamlessly works with your favorite design software, including Adobe Illustrator, Photoshop, InDesign and CorelDRAW. With VersaWorks, you can control up to four Roland printers from one personal computer. And you will always be up to date with the latest software updates and media profiles with the VersaWorks Roland@NET auto update service.



### Fast Start-Up and Easy Operation

VersaArt series is designed for ease of use. Novices and professionals alike will appreciate the fast learning curve and easy procedures to start up, operate and shut down the printer. No mess 220/440 cc ink cartridges are easy to handle. Newly designed media shafts and flanges support rolls up to 40kg (88 lbs.) for unattended printing. VersaArt is also virtually maintenance free for even greater simplicity and productivity. Measuring just 2.6 m wide x 1.1 m high (101" wide by 43" high), the VersaArt RS-640 fits conveniently in just about any small shop environment. Expanding your production environment is easy as well because every Roland inkjet printer shares the same start up and operation procedures.



### Exceeding Current and Future Environmental Standards

VersaArt technology is Energy Star certified and operates without an additional power supply on a standard household electrical outlet. Advanced features optimize VersaArt ink consumption, reducing environmental waste and minimizing operational costs as well. Certified by Roland's Eco-Label system for environmental compliance, VersaArt series has been fully assessed for its environmental attributes. Information is available on the Roland web site at [www.rolanddg.com](http://www.rolanddg.com).



### Roland — Your Business Partner Now And in The Future

As a company, it remains our top priority to provide you with both the ultimate in product quality and reliability and the high service levels your business requires. With Roland, you get legendary Roland reliability and world-class service and support including training through Roland workshops and seminars.

